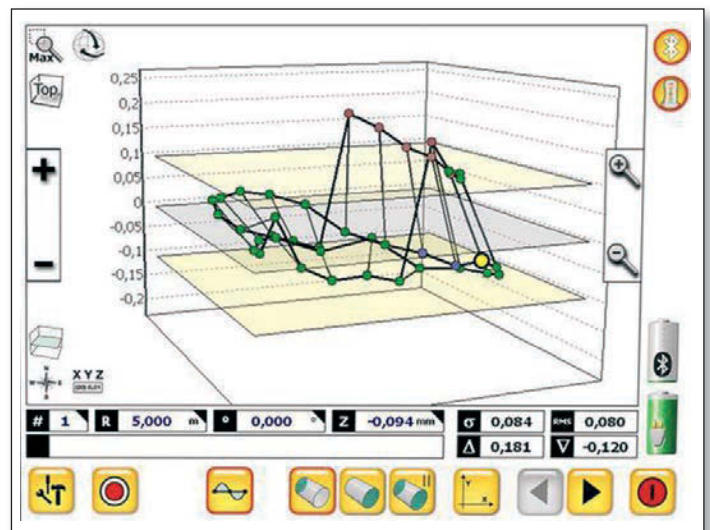


SP ProFlange® 100

Starter Package for Flange Flatness



Content of the Starter Package for **Flange Flatness**

SP ProFlange® 100



T405

Self Aligning Rotational Laser (BG 832550)

The T405 Laser is the first precision laser that can be completely controlled by a PC. Even the temperature, sensor data, vibrations etc. can be displayed. This device is the second generation of digital laser from Status Pro. Even self aligning with the sensors is possible just by a click in the software. The complete equipment is connected by Bluetooth so that the handling is as easy as possible.

The laser is equipped with an inbuilt magnet for an easy mounting.



R260 Laser Receiver (BG 832600)

The R260 measures the position of the rotating laser beam up to 50 m distance. A display on top of the receiver presents the measured values from the 60 mm CCD and in combination with the mirror you can read the values from the top, the front or from the back!

Additional a LED at the front shows the current position of the laser reference plane. Furthermore the keypad on the side allows to control the receiver and the laser. So complete measurements can be performed without any IT. If you add the optional software to the system you can capture the points by pressing the red measure button.



3x Battery Pack Li-Ion (BG 800071)

Charger for two Li-Ion batteries (BG 831680)



Adapter for measurement stud (R260) (BG 831550)



Magnetic base with low profile magnet for R260 (BG 832520)



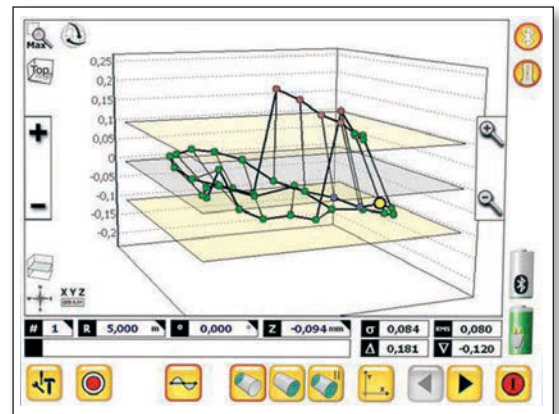
ProFlange® v3

Software with starter license (SW 200025)

Flange measurement at its best

Easy measurement and full analysis in one software.

- Easy and fast On Site measurement mode or full administrator mode
- 2D and 3D Views, free rotation in 3D
- Data view with all measurement and analysis results
- Short waviness and flange angle at a glance
- No limit to the amount of rings or points to be measured
- One click report with all graphics and values in pdf format
- Easy to use touchscreen software



Launchpad®

Software with starter license (SW 400010)

The launchpad is perfectly equipped to work with the self-calibrating T4xx rotation laser. Together they are an innovative combination of hard and software, enabling useful pre-adjustments for measurement and results in read-out.



Also available:

SP ProFlange® 200



Content of ProFlange 200:

- 1x T405 laser source with magnet for flange measurements (BG 832500)
- 1x Receiver R260 with 60 mm range, Bluetooth (BG 832600)
- 1x Adapter for measurement stud (R2xx) (BG 831550)
- 1x Magnetic base with low profile magnet (R2xx) (BG 832520)
- 3x Rechargeable battery (BT 800071)
- 1x Charger for two 2 Li-Ion batteries (BG 831680)
- 1x DU425 Display Unit with touchscreen & bluetooth (IT 200425)
- 1x ProFlange V3 Software for Flanges, first licence (SW 200025)
- 1x Launchpad for controlling the T430 laser, first license (SW 400010)
- 1x Plastic versatile box (BT 990054)
- 1x Instruction manual R260 laser receiver (BT 991004)
- 1x USB Stick with program and manuals (DBPA SP USB-MICRO)
- 1x Rugged case with foam inlays (BG 990120)



Please contact us for more information.



Status Pro Maschinenmesstechnik GmbH
Mausegatt 19 · D-44866 Bochum
Phone: + 49 (0) 2327 - 9881 - 0
Fax: + 49 (0) 2327 - 9881 - 81
www.statuspro.com · info@statuspro.com

Distributor